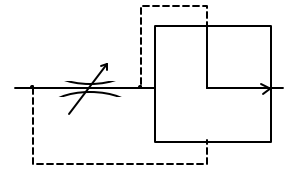


TVA SERIES



Two-Speed Solenoid Operated Valve

Description: The TVA is a two speed valve that is operated by a standard, NFPA D03 style solenoid valve*. The two speeds are pre-set by manual flow adjustment knobs. The TVA can be operated as either a normally high speed or normally low speed valve. This is determined by the style of D01 valve that is used to operate the TVA. The TVA provides remote two-flow control of high pressure and flows via response to a directional control valve.

Desired TVA operation	Specification for the controlling NFPA D03 4-Way Valve*
Normally High Speed	Pressure must be applied to Port A when the solenoid is not energized. Pressure must be applied to Port B when the solenoid is energized.
Normally Low Speed	Pressure must be applied to Port B when the solenoid is not energized. Pressure must be applied to Port A when the solenoid is energized.

Applications: High flow control circuits in die casting and press circuits that require two flow levels (speeds) and quick valve response via a directional control valve. Ideal for circuits which require deceleration control without the expense of servo systems.

Special Features:

- Standard NFPA D03 control ports are machined into the valve for ease of application and minimal control piping.

ZAYTRAN Standards:

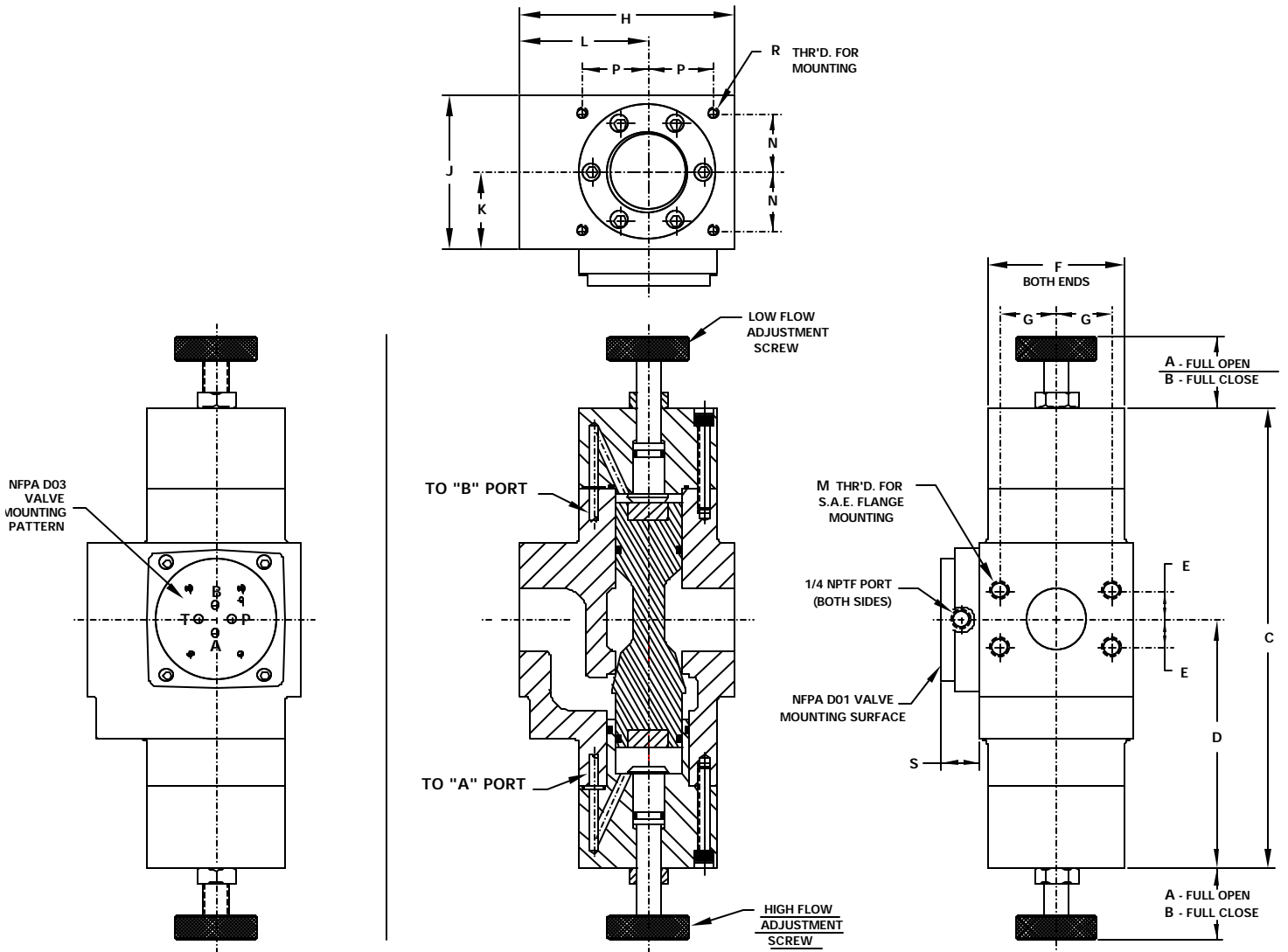
- Pressure drop is minimal due to large flow passages.
- In-Line mounting for ease of installation.
- SAE standard flange mounting patterns.
- Durable high grade ductile iron body.
- Spool has a hardened engagement area for extended life.

* The NFPA D01 solenoid valve is not supplied by ZAYTRAN

ZAYTRAN

ZAYTRAN

Two-Speed Solenoid Operated Valves



English (Inches)	A	B	C	D	E	F	G	H	J	K	L	M	N	P	R	S	T
3200 (2")	3.75	2.75	13.62	7.25	0.84	3.87	1.53	6.21	5.25	2.62	3.87	1/2"-13	1.62	1.80	3/8-16	1/4"	0.93
Metric (mm)	A	B	C	D	E	F	G	H	J	K	L	M	N	P	R	S	T
3200	95.3	69.9	345.9	184.2	21.3	98.3	38.9	157.7	133.4	2.62	1.59	1/2"-13	1.59	1.59	3/8-16	1/4"	23.6