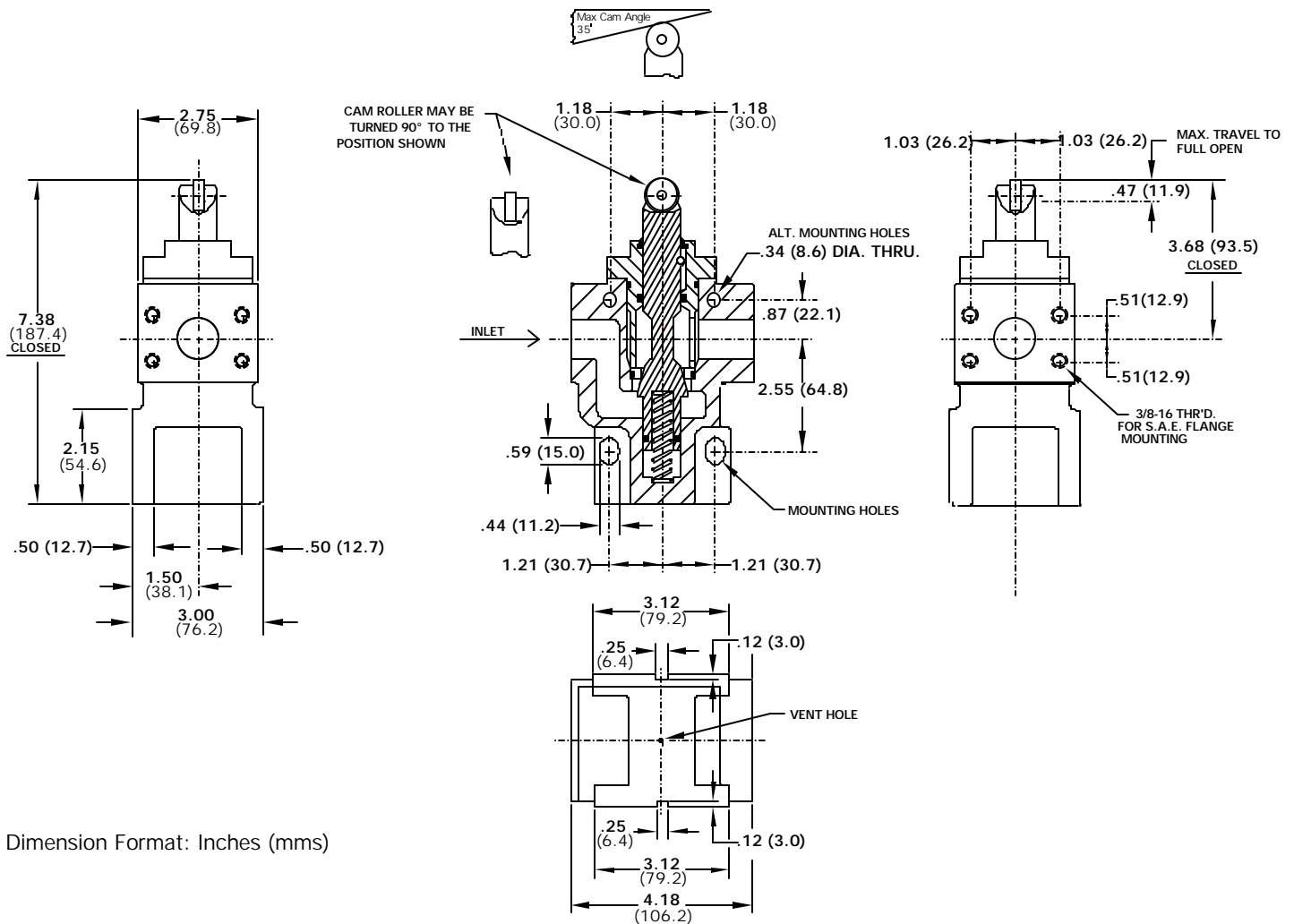


# ZAYTRAN

## Reversible, Cam-Operated Coolant Valve



Maximum Pressure*	150 PSI (10.2 Bars)
Flow @ 150 PSI (10.2 Bars)	95 GPM (359 LPM)
Pressure Drop @ 50 GPM (189 LPM)	25 PSI (1.7 Bars)
Ports	1" SAE Bolt Pattern, Code 61
Cam Actuation Force	40 Pounds (18.2 kg) @ 150 PSI (10.2 Bars)
Cam Angle	Maximum 35°
Cam Roller	As Shown or Rotated 90°

\* The standard maximum operation pressure indicated results in a cam actuation force of 40 pounds (18.2 kg).