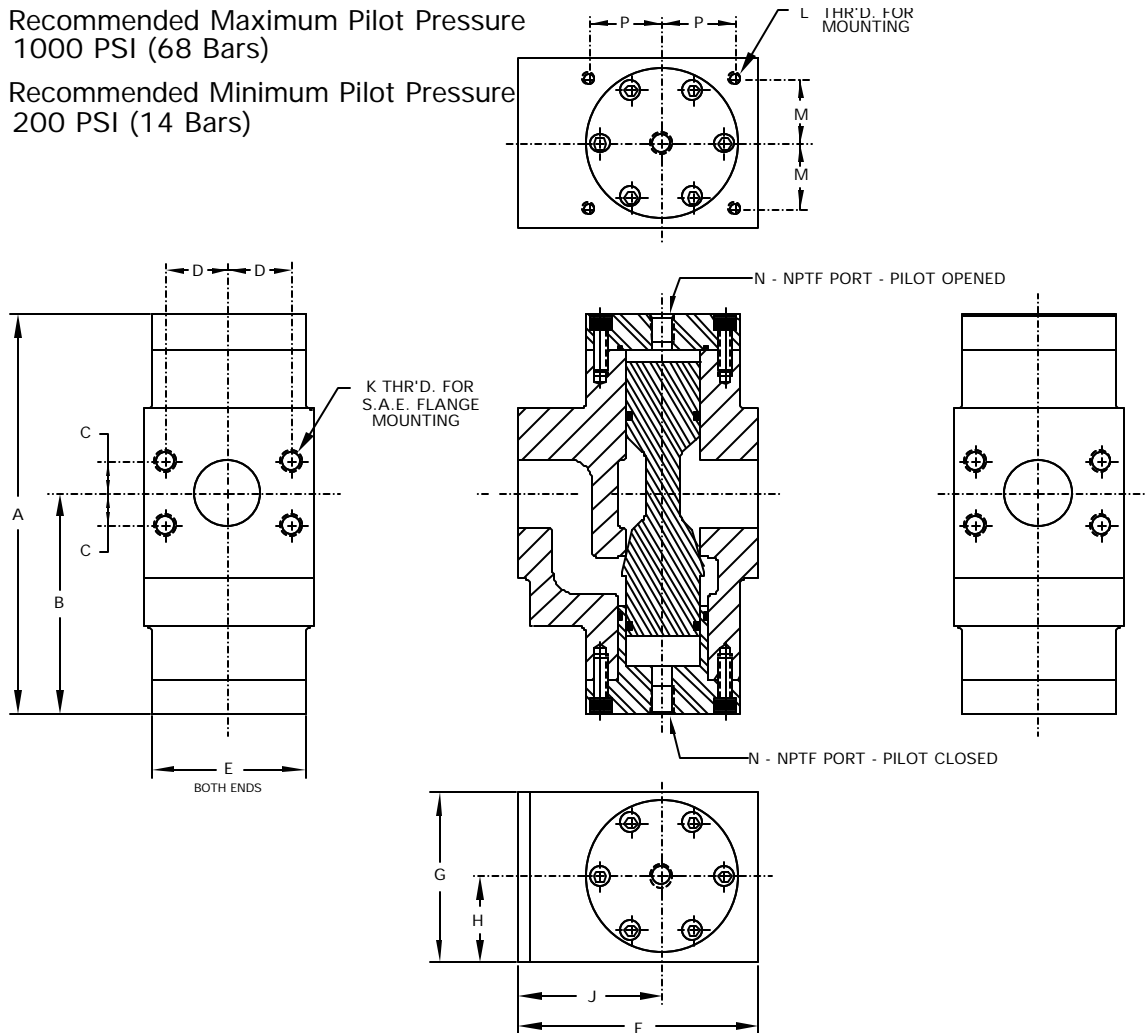


# ZAYTRAN

## Double Piloted Hydraulic Valves

Recommended Maximum Pilot Pressure  
1000 PSI (68 Bars)

Recommended Minimum Pilot Pressure  
200 PSI (14 Bars)



English (Inches)	A	B	C	D	E	F	G	H	J	K	L	M	N	P
<b>1600 (1")</b>	6.50	3.52	0.51	1.03	2.62	3.90	2.75	1.37	2.28	3/8"-16	1/4"-20	1.12	1/4"	1.12
<b>2400 (1.5")</b>	8.75	3.89	0.70	1.37	3.37	5.25	3.75	1.87	3.16	1/2"-13	5/16"-18	1.43	1/4"	1.60
<b>3200 (2")</b>	10.78	4.98	0.84	1.53	3.87	6.21	4.00	2.00	3.87	1/2"-13	3/8"-16	1.62	1/4"	1.80
<b>4800 (3")</b>	17.00	9.75	1.21	2.09	6.00	10.87	6.00	3.00	7.00	5/8"-11	-	-	1/4"	-
Metric (mm)	A	B	C	D	E	F	G	H	J	K	L	M	N	P
<b>1600</b>	165.1	89.4	13.0	26.2	66.5	99.1	69.9	34.8	57.9	3/8"-16	1/4"-20	28.4	1/4"	28.4
<b>2400</b>	222.3	98.8	17.8	34.8	85.6	133.4	95.3	47.5	80.3	1/2"-13	5/16"-18	36.3	1/4"	40.6
<b>3200</b>	273.8	126.5	21.3	38.9	98.3	157.7	101.6	50.8	98.3	1/2"-13	3/8"-16	41.1	1/4"	45.7
<b>4800</b>	431.8	247.7	30.7	53.1	152.4	276.1	152.4	76.2	177.8	5/8"-11	-	-	1/4"	-