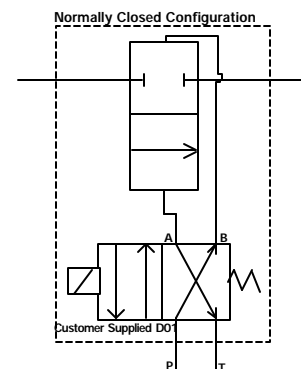
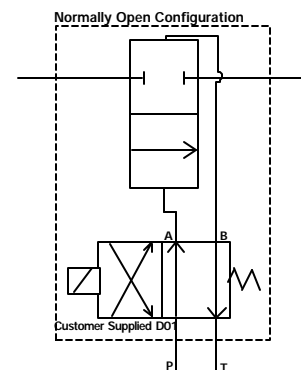


TVT SERIES

Two-Way Solenoid Operated Valves

Description: The TVT is an "on-off" valve that is operated by a standard, NFPA D03 style solenoid valve*. The TVT can be operated as either a normally open or normally closed valve. This is determined by the style of D03 valve that is used to operate the TVT. The TVT provides remote on-off control of high pressure and flows via response to a directional control valve.

Desired TVT operation	Specification for the controlling NFPA D03 4-Way Valve*
Normally Closed	Pressure must be applied to Port A when the solenoid is not energized. Pressure must be applied to Port B when the solenoid is energized.
Normally Open	Pressure must be applied to Port B when the solenoid is not energized. Pressure must be applied to Port A when the solenoid is energized.



Applications: High flow control circuits in die casting and press circuits that require quick valve response under control of a four-way D03 valve.

Special Features:

- Standard NFPA D03 control ports are machined into the valve for ease of application and minimal control piping.
- Designed with metal-to-metal spool-to-seat contact for positive shut-off.

ZAYTRAN Standards:

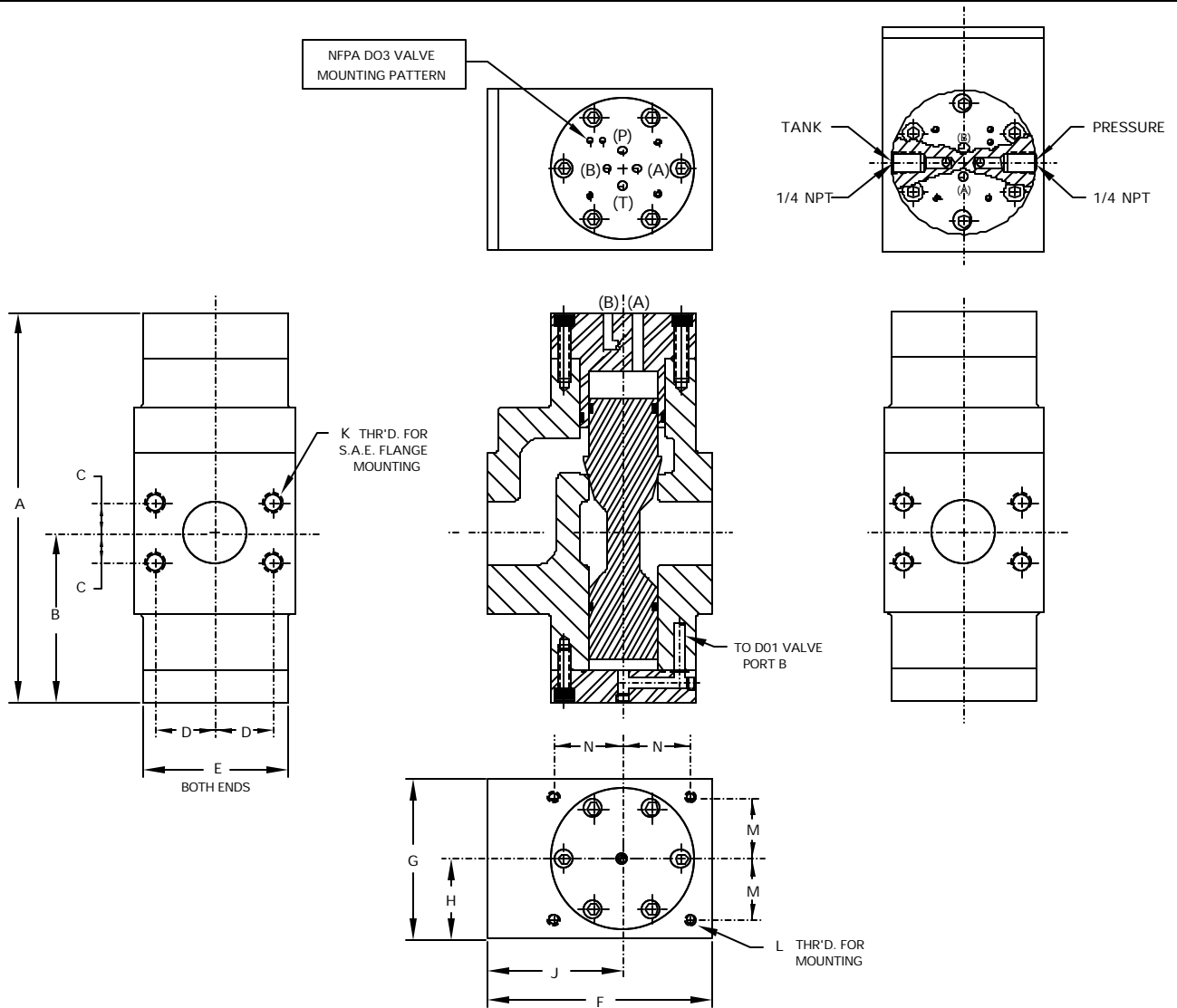
- Pressure drop is minimal due to large flow passages.
- Durable high grade ductile iron body.
- In-Line mounting for ease of installation.
- Spool has a hardened engagement area for extended life.
- SAE standard flange mounting patterns.

* The NFPA D03 solenoid valve is not supplied by ZAYTRAN

ZAYTRAN

ZAYTRAN

Two-Way Solenoid Operated Valves



English (Inches)	A	B	C	D	E	F	G	H	J	K	L	M	N
2400 (1.5")	8.80	4.00	0.70	1.37	3.37	5.25	3.75	1.87	3.16	1/2"-13	5/16"-18	1.43	1.60
3200 (2")	10.79	4.98	0.84	1.53	3.87	6.21	4.00	2.00	3.87	1/2"-13	3/8"-16	1.62	1.80
Metric (mm)	A	B	C	D	E	F	G	H	J	K	L	M	P
2400	223.5	101.6	17.8	34.8	85.6	133.4	95.3	47.5	80.3	1/2"-13	5/16"-18	36.3	40.6
3200	274.1	126.5	21.3	38.9	98.3	157.7	101.6	50.8	98.3	1/2"-13	3/8"-16	41.1	45.7